



**HENRY**  **WILTSHIRE**

[www.henrywiltshire.co.uk](http://www.henrywiltshire.co.uk)

Henry Wiltshire Limited Company Registration No. 07120440 VAT Registration No. 994 397 354

Registered Office: 2 Laybourne House, Admirals Way, Canary Wharf, London, United Kingdom E14 9UH

# Whiston Road

£550,000

🛏️ 2 🚿 2 🛋️ 1



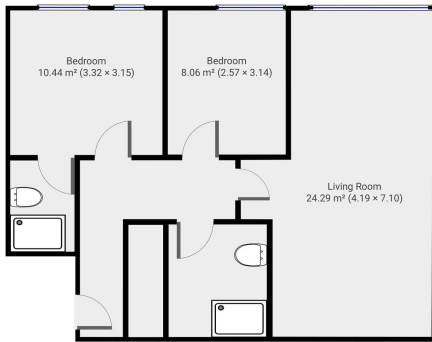
- Two Bedrooms
- Two Bathrooms
- Close to Spitalfields Market
- 116 Year Lease Remaining
- Council Tax D
- EPC C
- Chain Free
- Floor To Ceiling Windows
- Modern Bathroom
- Viewing Essential



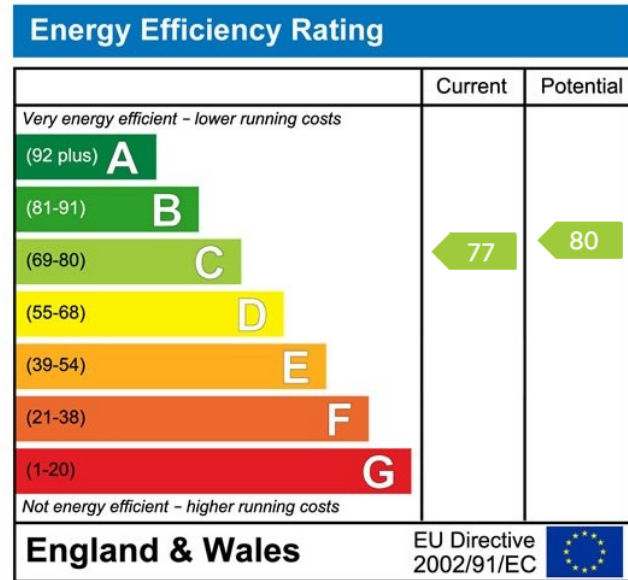
TWO BEDROOM | TWO BATHROOM | 2ND FLOOR | C.667 SQ.FT  
 | PRIVATE BALCONY | BRIGHT & SPACIOUS | AMPLE STORAGE  
 | FLOOR TO CEILING WINDOWS



**Whiston Road, E2**  
 Total Area: 62.1 sq metres approx.



\*\*\*Please note: Whilst every attempt has been made to ensure the accuracy of our floor plans please note that measurements are approximate and no responsibility is taken for any error, omission or misstatement. The floor plans we produce are for representation purposes only and should be used as such by any prospective purchaser. No guarantee is given on the total square footage of the property if quoted on our plans. Any figure given is for initial guidance only and should not be relied on as a basis for valuation purposes.\*\*\*



UK Offices | Canary Wharf - E14 | Nine Elms - SE1 | Royal Docks - E16 | Bow - E3 | Hayes, Middlesex - UB3 | Manchester - M2

International Offices | Dublin | Abu Dhabi | Hong Kong | Singapore

